

**Impressionist Art Gallery**

*Catalog*



Spring 2006

## Welcome to the Spring/Summer 2006 Impressionist Art Catalog...

A treat for your eyes! This catalog contains all the beautiful works of Impressionism from our Impressionist-Art-Gallery.com website. It's designed as a quick and simple visual reference tool to help you make your selections easier by focusing on the paintings together. For the fascinating story behind each painting please visit [Impressionist-Art-Gallery.com](http://Impressionist-Art-Gallery.com)

You will notice that each painting has a reference code (e.g. MON12-**A**). This helps us when ordering and also shows the **price bracket** for that painting. Because each painting has varying degrees of detail that affect the price, I have split the paintings into three categories:



**A - Classic.** These paintings normally feature landscape with an uncomplicated range of colors.



**B – Medium.** These paintings often feature a person or landscape with a range of colors and may have more detail.



**C – Complex.** These paintings often feature two or more people and will include a complicated range of colors or a more detailed feature.

## NEW! Summer 2006 Price List

### Category A

16 x 20 - \$169.99  
20 x 24 - \$199.99  
24 x 36 - \$259.99  
30 x 40 - \$339.99  
36 x 48 - \$449.99

### Category B

16 x 20 - \$199.99  
20 x 24 - \$249.99  
24 x 36 - \$319.99  
30 x 40 - \$399.99  
36 x 48 - \$529.99

### Category C

16 x 20 - \$289.99  
20 x 24 - \$349.99  
24 x 36 - \$429.99  
30 x 40 - \$549.99  
36 x 48 - \$699.99

#### Corporate & Hospitality Discounts

If you are a company, Corporate Art Consultant or hotel owner and are looking to create a unique ambience, the timeless elegance of Impressionist art could well be within your budget.

The richness and vibrancy of Impressionist oil paintings creates a feeling of *timeless elegance*. With the unique wide appeal and non-offensive nature of Impressionism, our museum quality reproductions make an ideal choice for the hospitality and corporate industry.

We are happy to supply Impressionist oil painting reproductions to you on a one-by-one basis or if you require more than five, we are happy to offer you a multi-buy hospitality discount.

For a free no-obligation quote please go to

[http://www.impressionist-art-gallery.com/corporate\\_art\\_consultant.html](http://www.impressionist-art-gallery.com/corporate_art_consultant.html)

Every painting is hand-painted to Museum quality by one of our experienced professional artists and is covered by our no-questions no-hassle 365 day FULL money back guarantee. I don't want you to like your painting. I want you to **LOVE** it and be thrilled every time you gaze at its beauty.

Impressionism has a special kind of magic that can't easily be explained.

Maybe it's because each painting is soaked in history...

Maybe it's because the artists risked everything to paint them...

Maybe it's because they aren't like normal paintings but are painted in quick brushstrokes that capture the moment in ways we've never seen before...

Maybe it's because we know that the paintings are worth many millions...

Whatever causes the magic remains a mystery but I know I experience an overwhelming emotion every time I look at these paintings. Our oil painting reproductions really do capture the magic of the original masterpieces and it brings me great joy to be able to share these paintings with you.

Prepare to experience a whole new world...

*Paul Williams*

Impressionist-Art-Gallery.com

# Monet

[San Giorgio Maggiore at Dusk](#)



**MON1-A**

[Haystacks at the End of Summer](#)



**MON2-A**

[Regatta at Argenteuil](#)



**MON3-B**

[Woman With a Parasol](#)



**MON4-B**

The Grand Canal,  
Venice



MON5-A

Railway Bridge at  
Argenteuil



MON6-B

The Poppy Field



MON7-B

Autumn at Argenteuil



MON27-A

Woman Reading



MON9-B

Houses Of Parliament



MON10-A

[Waterlilies 1908](#)



**MON11-A**

[La Rue Montorgueil](#)



**MON12-A**

[Lady With a Parasol](#)



**MON13-B**

[The Japanese Bridge](#)



**MON14-B**

[Argenteuil](#)



**MON15-B**

[Train In The Snow](#)



**MON16-B**

[Rouen Cathedral](#)



**MON18-A**

[The Luncheon](#)



**MON19-B**

[Boulevard des Capucines](#)



**MON20-B**

[Thames Below Westminster](#)



**MON22-A**

[Camille on the Beach](#)



**MON21-B**

[Garden at Vetheuil](#)



**MON25-B**

[Terrace at Sainte Adresse](#)



MON24-B

[Train in the Countryside](#)



MON23-A

[Girl Beneath a Willow](#)



MON26-A

[Madame Monet](#)



MON17-B

[Bridge at Argenteuil](#)



MON28-A

[Impression, Sunrise](#)



MON8-A

# Renoir

[Le Moulin de la Galette](#)



REN1-C

[Young Girls at the Piano](#)



REN2-C

[The Bathers](#)



REN3-C

[Gabrielle With a Rose](#)



REN4-B

[La Loge](#)



REN5-B

[The Umbrellas](#)



REN6-C

[Dance at Bougival](#)



REN7-C

[Gabrielle and Jean](#)



REN8-B

[Portrait Of Claude  
Monet](#)



REN9-B

[Girl Combing Her  
Hair](#)



REN10-B

[Luncheon of the  
Boating Party](#)



REN11-C

[Portrait of Victor  
Chocquet](#)



REN12-B

Alfred Sisley and his Wife



**REN13-B**

# Van Gogh

[Sidewalk Café at Night](#)



**VAN1-B**

[The Church at Auvers](#)



**VAN2-B**

[Self-Portrait With Bandaged Ear](#)



**VAN3-B**

[Vase With 12 Sunflowers](#)



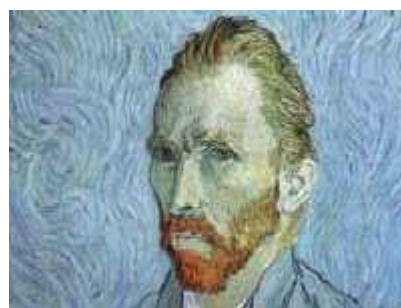
**VAN4-B**

[Starry Night](#)



**VAN5-B**

[Self Portrait](#)



**VAN6-B**

[Irises](#)



**VAN7-A**

[Poets Garden](#)



**VAN8-B**

[St Paul's Hospital](#)



**VAN9-B**

[Vincent's Bedroom](#)



**VAN10-B**

[Road With Cypresses](#)



**VAN11-B**

[Vincent's Chair](#)



**VAN12-A**

[Olive Trees With  
Yellow Sky and Sun](#)



**VAN14-A**

[Farmhouse in a  
Wheat Field](#)



**VAN15-A**

[Almond Blossoms](#)



**VAN16-A**

[Cottages at Cordeville](#)



**VAN18-B**

[The Potato Eaters](#)



**VAN17-B**

[The Exercise Yard](#)



**VAN22-B**

[The Night Cafe](#)



**VAN20-B**

[Wheatfield With Cypresses](#)



**VAN23-B**

[The Harvest](#)



**VAN19-B**

[Adeline Ravoux](#)



**VAN21-A**

[Sunflowers](#)



**VAN13-B**

# Degas

[The Star](#)



DEG1-A

[Women Ironing](#)



DEG2-B

[Absinthe](#)



DEG3-B

[At The Races](#)



DEG4-B

[The Young Spartans](#)



DEG5-C

[The Dancing Class](#)



DEG6-C

[Woman With  
Chrysanthemums](#)



DEG7-B

[Dance Foyer at the  
Opera](#)



DEG8-C

[The Pedicure](#)



DEG9-B

[Combing The Hair](#)



DEG10-A

[At The Stock  
Exchange](#)



DEG11-B

[Portrait of Diego  
Martelli](#)



DEG12-B

[Miss Lala](#)



**DEG13-B**

# Gauguin

[Beach at Dieppe](#)



GAU1-A

[Village in the Snow](#)



GAU2-B

[Family in the Garden](#)



GAU3-B

[When Will You Marry?](#)



GAU4-B

[Arearea](#)



GAU5-B

[La Belle Angele](#)



GAU6-B

Nevermore



GAU7-B

The White Horse



GAU8-B

The Swineherd



GAU13-B

Self Portrait



GAU10-B

Where Do We Come From?



GAU11-C

And The gold Of Their Bodies



GAU12-B

[Vision After The Sermon](#)



**GAU9-B**

# Manet

[The Balcony](#)



MAN1-C

[Reading](#)



MAN2-B

[The Blonde With Bare Breasts](#)



MAN3-B

[Claude Monet in his Studio Boat](#)



MAN4-B

[Luncheon on the Grass](#)



MAN5-C

[The Races at Longchamp](#)



MAN6-B

[A Bar at the Folies-Bergere](#)



MAN7-B

[Music in the Tuileries Gardens](#)



MAN8-C

[Olympia](#)



MAN9-B

[The Grand Canal](#)



MAN10-B

[Lola de Valence](#)



MAN12-B

[The Fifer](#)



MAN13-A

Maximilian



**MAN14-C**

Peonies



**MAN15-A**

# Cezanne

[Apples and Oranges](#)



**CEZ1-B**

[Bridge at Maincy](#)



**CEZ2-A**

[The Card Players](#)



**CEZ3-B**

[Chateau Noir](#)



**CEZ4-A**

[A Modern Olympia](#)



**CEZ5-B**

[L'Estaque](#)



**CEZ6-B**

[The House Of The Hanged Man](#)



**CEZ7-B**

[The Woman With a Coffee Pot](#)



**CEZ8-B**

[The Poplars](#)



**CEZ9-A**

[Farmyard at Auvers](#)



**CEZ10-B**

[Village of Gardanne](#)



**CEZ11-A**

# Pissarro

[The Little Country Maid](#)



PIS1-B

[The Approach to the Village of Voisins](#)



PIS5-B

[Place du Theatre Francais](#)



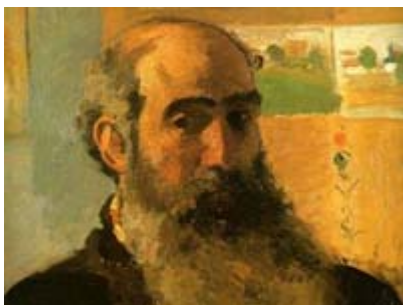
PIS3-B

[The Boulevard Montmatre at Night](#)



PIS4-B

[Self-Portrait](#)



PIS2-A

[Louveciennes Road](#)



PIS6-B

[The Red Roofs](#)



**PIS8-A**

[The Seine at Marly](#)



**PIS9-B**

[Lordship Lane Station](#)



**PIS7-B**

[Haymaking at Eragny](#)



**PIS10-B**

# Sisley

[Boat in a Flood](#)



**SIS1-B**

[Floods at Port Marly](#)



**SIS2-B**

[Regatta at Molesey](#)



**SIS4-B**

[Village by the Seine](#)



**SIS9-B**

[Snow at Louveciennes](#)



**SIS6-A**

[Snow at Veneux](#)



**SIS7-A**

[The Square at Argenteuil](#)



SIS8-B

[The Small Meadows in Spring](#)



SIS5-A

[Wheat Fields Near Argenteuil](#)



SIS10-A

[The Footbridge at Argenteuil](#)



SIS3-B

To be kept up to date with all new arrivals and latest catalog editions please join our free monthly Impressionist Newsletter at

<http://www.impressionist-art-gallery.com>

Each month I'll let you know about all the new paintings we have added to the gallery and choose my favorite as the "**painting of the month**" and give you the chance to order it from a special **subscribers only** page where you can save \$100 or more!

And sometimes I might feature 2 masterpieces in the "subscribers only" page where you can buy one at a special discount and receive the other one FREE!

But these special gifts are only available to subscribers only, so if you love Impressionism as much as we do, join the club and I look forward to welcoming you to the **World of Impressionism!**